



2026 À La Carte Rental Guide

SAINT PATRICK PALACE

WWW.SAINTPATRICKPALACE.COM



CONTACT

866-498-3970
2430 SW 130th Avenue, Davie, FL
33325

info@saintpatrickpalace.com



WWW.SAINTPATRICKPALACE.COM



[@SAINTPATRICKPALACE](https://www.instagram.com/saintpatrickpalace)



[SAINTPATRICK PALACE](https://www.facebook.com/saintpatrickpalace)



[SAINTPATRICK PALACE](https://www.pinterest.com/saintpatrickpalace)

WELCOME!!

A PRIVATE ESTATE FOR LUXURY WEDDINGS & EVENTS IN DAVIE, FLORIDA

Tucked away in the charming town of Davie, Saint Patrick Palace is a private, gated estate that offers a one-of-a-kind setting for luxury outdoor celebrations and intimate weddings. Conveniently located near Cooper City, Plantation, Sunrise, Southwest Ranches, and Hollywood, our five-acre property blends timeless elegance with total privacy for unforgettable events of every kind.

From the peaceful pond and fountain to the heated saltwater pool and expansive travertine patio, every corner of the estate is designed with both beauty and comfort in mind. **With room to host up to 150 guests and overnight accommodations for up to 18,** Saint Patrick Palace is ideal for single-day gatherings or full wedding weekend experiences.

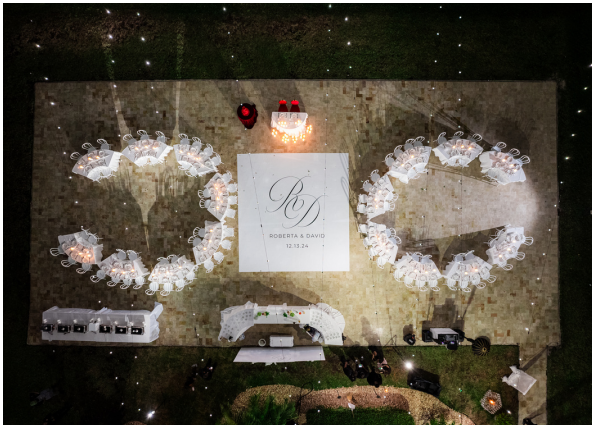
Saint Patrick Palace

PROPERTY FEATURES



INTERIOR:

- 6,389 square foot main residence and guest cottage with 5 bedrooms & 6 bathrooms
- 24-foot foyer and grand staircase
- Ten-foot ceilings and hardwood floors
- Updated chef's kitchen with marble countertops, a six-burner gas stove, and double ovens
- Smart home with smart control lighting, audio, video, and security system
- Air-conditioned three-car garage



EXTERIOR:

- 5 acres of private property with gated entrance
- Heated saltwater pool surrounded by large travertine-tiled deck
- Private pond with fountain and dock
- 80-foot by 40-foot paved outdoor area
- Long driveway for guest parking
- Wrap around veranda and private balconies with water views



VENUE AREAS:

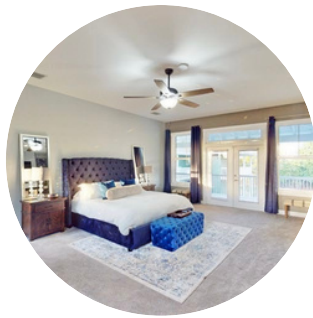
- Poolside Courtyard
- Waterside Dock
- Travertine terrace (40ft x 80ft)
- Main residence



Getting Ready Suites

BRIDAL/MASTER SUITE

With a total of four bedrooms and four bathrooms in the main residence, the Saint Patrick Palace offers ample space and comfort for the entire bridal party to get ready in style. The master suite is the epitome of luxury and elegance, boasting a beautifully appointed bedroom, an adjoining sitting area for relaxation, and a generously sized master bathroom with a spacious closet.



GUEST COTTAGE

Nestled beside the main residence, the guest cottage at the Saint Patrick Palace provides a charming and private retreat. Featuring a separate entrance for added convenience, this two-story cottage boasts a cozy loft-style bedroom, offering a serene escape. With one bathroom on each floor, the guest cottage ensures comfort and convenience. Moreover, the cottage is equipped with a kitchenette, making it an ideal space for members of your wedding party to prepare before the festivities begin.





WHAT TO EXPECT

VENUE PRICING

At the Saint Patrick Palace, our pricing works a little differently than other venues! Simply put, pricing is based on how much of the estate you use and how long you use it!

VENUE RENTAL OPTIONS

Our venue rental options (listed on the next page) provide a starting point for your planning and are fully customizable.

EVENT HOURS

Depending on your event's needs, you can also add additional event hours (at an hourly rate) or additional overnight stays (at a nightly rate).

WHAT'S INCLUDED

Venue rental includes use of the residences, grounds, and amenities on our five-acre property. The Saint Patrick Palace provides the setting for you to make your dream event a reality. We welcome the outside vendors of your choice – with no additional fee!

[Download our Preferred Vendor List](#)

WHAT'S INCLUDED



WELCOME FIZZ

- Champagne at the Main House
- Soda, water, coffee, & tea
- Sweet & savory platters
- Serves 10-15 guests

FRESHNESS & EVENT ESSENTIALS

- Soap, shampoo, conditioner, & lotion
- Bath towels, hand towels, & washcloths
- Paper towels, toilet paper, & garbage bags



AMENITIES & COMFORT:

- Tiki Torches (for ambiance)
- Outdoor Lighting (for evening use)
- Heated Pool (for year-round comfort)
- Wi-Fi (high-speed internet)
- Billiards Table (for entertainment)
- Air-conditioned 3-car Garage (for comfort and extra space)
- Guest Shed (additional accommodation or storage)



SPECIAL EVENT INSURANCE (FOR COVERAGE OF LIABILITIES)

- Optional Wedding Cancellation Coverage (for unforeseen changes)

IMPORTANT INFORMATION

SECURITY DEPOSIT & IMPORTANT INFORMATION

In addition to venue rental fees, all venue rental reservations will include:

- 3.5% Convenience fee for credit and debit card transactions
- \$250 Security Deposit (Damage Deposit) is required and will be held pending post-event inspection.

IMPORTANT INFORMATION FOR ALL VENUE RENTAL RESERVATIONS:

- A non-refundable retainer of 50% of your total contract amount is required to reserve your date. The remaining balance is due 90 days prior to your reservation.
- All events include a professional security detail to ensure a safe, private, and well-managed experience. Please inquire for additional information regarding services and available enhancements.
- All events are RSVP-only; no public events are permitted. A complete guest list must be submitted no later than 3 days prior to the event date.
- We maintain an open vendor policy. All vendors must register and receive venue approval at least 10 days before the event start date. Unregistered vendors are not permitted to operate on the property.



VENUE RENTAL OPTIONS

SIGNATURE WEDDING WEEKEND EXPERIENCE

Includes full access to the estate grounds and all interior living spaces across multiple days, along with your 6-hour wedding celebration, a private bridal suite, and additional dedicated preparation spaces within the main residence. Designed for a fully immersive experience, this option allows you to host rehearsal gatherings, your wedding day, and post-celebration moments all within one exclusive private estate setting—creating a true destination-style wedding weekend.

**STARTING AT
\$13,000**

**Up to 150 event guests
Check-In 12:00 pm Day
Before Wedding
Check-Out 12:00 pm the
Day Following the
Wedding**

WEDDING PRELUDE EXPERIENCE

Includes full access to the estate grounds and all interior living spaces for your 6-hour wedding celebration, along with a private bridal suite and additional dedicated preparation spaces within the main residence, plus extended estate access beginning the day prior. This experience allows for early arrival, vendor setup, and rehearsal coordination, creating a calm and seamless lead-in to your wedding day within an exclusive private estate setting.

**STARTING AT
\$10,500**

**Up to 150 event guests
Check-In 2:00 pm Day
Before Wedding
Check-Out 2:00 am
Following the Wedding**

SIGNATURE WEDDING EXPERIENCE

Includes full access to the estate grounds and all interior living spaces for your 6-hour wedding celebration, along with a private bridal suite and additional dedicated preparation spaces within the main residence, complemented by a 24-hour private estate rental period. Designed for a seamless transition from celebration to relaxation, this experience allows you to enjoy your wedding day and continue the experience beyond the event within an exclusive private estate setting.

**STARTING AT
\$9,500**

**Up to 150 event guests
Check-In 10:00 am
Wedding Day
Check-Out 10:00 am the
Following Day**

FULL ESTATE WEDDING DAY EXPERIENCE

Includes full access to the estate grounds and all interior living spaces for your 6-hour wedding celebration, along with a private bridal suite and additional dedicated preparation spaces within the main residence. Enjoy the freedom to utilize the entire estate—from preparation through reception—creating a seamless and elevated wedding day within an exclusive private estate setting. Flexible setup time is available based on scheduling.

**STARTING AT
\$7,500**

**Up to 150 event guests
Check-In 10:00 am
Wedding Day
Check-Out 2:00 am
Following the Wedding**

WEDDING DAY EVENT EXPERIENCE

Includes full access to the estate grounds for your 6-hour wedding celebration, along with a private bridal suite and additional dedicated preparation spaces within the main residence. Enjoy access to select interior living areas—including the kitchen and dining spaces—as well as the guest cottage. Flexible setup time is available based on scheduling. Designed for couples seeking an elegant, single-day wedding experience within a private estate setting.

**STARTING AT
\$7,000**

**Up to 150 event guests
Check-In 10:00 am
Wedding Day
Check-Out 2:00 am
Following the Wedding**

HOW VENUE PRICING WORKS

01

SCHEDULE A FREE VENUE TOUR

Discover the beauty of the Saint Patrick Palace by scheduling a personalized tour, offering an exclusive glimpse into its luxurious interior and lush 5-acre grounds.

02

REQUEST FOR SPECIAL EVENT USE FORM

Scan the QR code below to download a copy of our form. Complete the form with as many details about your event as possible and return it to us.

03

ACCEPT THE PROPOSAL

We will prepare your custom proposal, including all taxes and deposits. Please note that the proposal will not hold your event date.

04

SIGN YOUR CONTRACT

Once you have accepted the proposal, signed your contract, and paid your non-refundable deposit, your event date will be blocked off on the Saint Patrick Palace calendar!



COMMUNICATION

CONTACT DETAILS

866-498-3970
info@saintpatrickpalace.com
2430 SW 130th Avenue,
Davie, FL 33325

OFFICE HOURS

M - F 9:00am - 5:00pm EST
Closed on weekends

[DOWNLOAD THE
REQUEST FOR SPECIAL
EVENT USE FORM:](#)



VENUE ADD-ON SERVICES



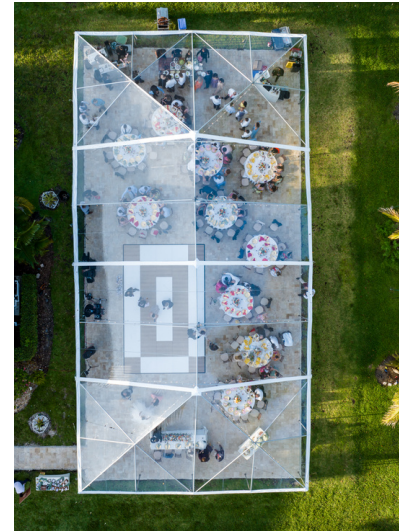
TENTS & STRUCTURES

- 40ft x 80ft clear tent with bistro lights - **\$3,500.00**
- 40ft x 80ft white tent with bistro lights - **\$3,000.00**
 - Pole-mounted misting fans - **\$100 each**
 - Evaporator cooling fans - **\$250 each**
 - Tent draping starting at **\$2,500.00**
 - Twinkle lights inside the tent starting at **\$1,500.00**
 - Chandeliers starting at **\$250.00 each**
- Truss structures starting at **\$2,000.00**
 - Truss draping starting at **\$1,500.00**



PLANNING & COORDINATION

- Full Wedding Planning Services - **\$4,000.00**
 - Pre-Planning & Design Development
 - Vendor Coordination & Management
 - Planning Oversight & Client Support
 - Wedding Week Coordination
 - Ceremony Rehearsal Coordination
 - Wedding Day Execution



PHOTOGRAPHY/VIDEOGRAPHY/CONTENT CREATION

- Two photographers **\$3,000.00**
 - 8 hours of coverage
 - Edited online gallery
- One photographer + one content creator **\$3,500.00**
 - 8 hours of coverage
 - Edited online gallery
 - Social-media-ready content
- One photographer + One videographer **\$4,250.00**
 - 8 hours of coverage
 - Edited online gallery



VENUE ADD-ON SERVICES



FLORALS & CANDLES

All packages may be customized to reflect your preferred color palette and floral style

- The Classic Collection **\$3,000.00**
 - 1 Ceremony Arch Floral Design
 - 1 Bridal Bouquet
 - 3 Bridesmaids Bouquets
 - 1 Groom Boutonnière
 - 3 Groomsmen Boutonnieres
 - 10 Low Reception Centerpieces
 - Sweetheart Table Floral Arrangement with Candles
- The Signature Collection **\$5,000.00**
 - The Classic Collection Plus...
 - 10 Pew Bouquets
 - 1 Flower Girl Basket with Petals
 - 10 Reception Centerpieces (5 Low, 5 Elevated with Candles)
 - 12 Uplights
- The Luxe Collection **\$9,000.00**
 - The Signature Collection Plus...
 - 1 Ceremony Arch or 2 Altar Floral Installations
 - 2 Ceremony Aisle Entrance Floral Arrangements
 - 1 Aisle Runner
 - 4 Bridesmaids Bouquets
 - 1 Groom Boutonnière
 - 4 Groomsmen Boutonnieres
 - 10 Reception Centerpieces (High or Low) with Stands and Candles
 - Head Table Backdrop Installation

Pricing based on guest counts up to 100 guests. Larger guest counts may require adjustments.